

**FOR PROS.  
BY PROS.**





**At Konstrukt™,**  
we create innovative  
chemical systems  
that solve surface  
preparation challenges  
of the construction  
industry.

# FOR PROS. BY PROS.

Konstrukt™ provides advanced construction chemical solutions to enable excellent surface preparation of substrates used in floors, walls and ceilings.

For over a decade, we have been leveraging the experience and expertise gained by Pacific Paint (Boysen) Philippines, Inc., a regional player in the chemical industry. We have listened to our customers very closely and have continually been coming up with innovative solutions to these particular set of challenges that they encounter.

With Konstrukt™, our clients are assured that our solutions are of the same high quality and superior durability that has made Boysen Paints the number one paint manufacturer in the Philippines.

Every need is carefully considered, every chemical system solution rigorously developed and manufactured.

Konstrukt™ is created for pros, by pros.



# BENEFITS

## PROFESSIONAL SURFACE PREPARATION

Correct and thorough surface preparation is the most important factor affecting the total success of surface treatment. Even the most technologically advanced coating system will fail if surface preparation is not done properly.

Konstrukt™ provides chemical systems that offer solutions to properly prepare different surfaces like floors, walls and ceilings. The chemical solutions are combined with traditional construction materials to enhance the performance of the materials, correct imperfections, and give them properties that the surfaces require.



## RESOURCE SAVINGS

Building construction is highly competitive, complex and risky. Defects or failures can mean going overbudget in substantial amounts.

At Konstrukt™, we can assist clients from the start of their projects during the planning stage to ensure that right decisions are made in making component configurations, material specifications, and functional performance for their surface preparation requirements. We can also come in with our chemical systems at a later stage to help clients who are experiencing problems like surface imperfections or substrate defects.

Our chemical solutions have been developed bearing in mind quality and safety issues, as well as to provide possible savings in manpower needs, money and materials.

# BENEFITS

## EASE OF USE

In developing our products, we consider the needs of the designer, the architect, the contractor and also the applicator. This means that the procedures for the application of the products are simple and friendly.

## PROFESSIONAL TECHNICAL SERVICE ON HAND

Konstrukt™ has a sales and technical team to teach, train, and troubleshoot as needed, making sure that products are applied correctly for optimal results. We can do on-site training and live applications so that customers can better understand our products in real time.

## CONTINUOUS RESEARCH & DEVELOPMENT

We think of our customers as our long-term partners, and as such we listen to their challenges, and experience them first-hand if we can. At Konstrukt™, we thrive on a culture of continuous innovation, and collaborate with our partners worldwide, if necessary, to come up with chemical systems that offer the best solutions.



# CATEGORIES

01

## WALLS & CEILINGS

Konstrukt™ Permaplast™

02

## DRYWALL

Konstrukt™ Durafill™

03

## FLOORING

Konstrukt™ Trafficshield™

Konstrukt™ Tileworks™



# 01

## WALLS & CEILINGS

Superior adhesion

Paint compatibility

High impact strength



# WALLS & CEILINGS

Excellent surface preparation is expected in a professional build. Having two of the biggest surfaces, walls and ceilings, prepared with such a high degree of craftsmanship is possible with Konstrukt Permaplast. It can create a favorable impact in two ways —first in the construction schedule, and second in the ability to fulfill what the end client wants.

Konstrukt's fine-sand finish can also stand alone in white, grey or black. Or the surface can be painted in any color the client chooses.

The concrete look, referred also as the beton look, for your walls and ceilings add a minimalistic and modern feel to any space.





### Konstrukt™ Permaplast™ K-222 Interior Render



### Konstrukt™ Permaplast™ K-202 High-Performance Acrylic Render



### Konstrukt™ Permaplast™ K-201 High-Performance Acrylic Skimcoat



## Konstrukt™ Permaplast™ K-201 High-Performance Acrylic Skimcoat

K-201 High-Performance Acrylic Skimcoat is a specially formulated bonding paste that is mixed with cement and applied on interior and exterior concrete substrates to correct surface imperfections prior to painting. It dries to a smooth cement finish and it repairs bubbles, honeycomb, and concrete defects such as waviness and plumbness from 2mm to 3mm thick. Product is not intended to applied on painted surfaces and concrete floorings.

#### Technical Data

Vehicle Type: Acrylic

VOC: 10 g/L

\*±2 g/L

Dry Time: Recoat in 1 hour. Full cure in 7 days.

\*Measured at 25°C and 50% relative humidity

\*\*Depending on thickness of application

Practical Coverage per 4-Liters: 10 sq. m. per 2mm coat

\*Depending on surface texture and porosity

Mixing Ratio: Approximately 5-kg cement per 4-Liters of K-201 High-Performance Acrylic Skimcoat

Pot Life: 30 minutes to 1 hour

Clean-up Solvent: Water

Packaging: 4-Liters and 16-Liters

Application: By trowel or putty knife

#### Surface Preparation

Surface should be clean and dry, free from dust, dirt, and other foreign matter. Defects on concrete like plumbness that are more than 3mm thick should be addressed by using exterior renders. Always dampen the concrete before application. Plastered walls should already be cured for at least 14-28 days prior to the application of a skimcoat.

#### Material Preparation

Put K-201 High-Performance Acrylic Skimcoat in a suitable container and mix it with sifted cement at a 1:1 ratio by weight until a lump-free, homogenous paste is achieved. Do not add water. Use Portland cement (for ordinary cement color) or white cement (to produce a white finish).

#### Application Schedule

Using a steel trowel, apply a thin layer of the mixture on the surface by firmly pressing the edge of the trowel on the concrete until all areas are covered. Let it dry for at least 1 hour before applying the second coat. If trowel marks are visible, let surface dry for at least another hour before sanding to further smoothen surfaces. Allow at least 7 days before painting. No need to neutralize.



# Konstrukt™ Permaplast™

## K-202 High-Performance Acrylic Render

K-202 High-Performance Acrylic Render is a specially formulated bonding paste that is mixed with cement and applied on interior and exterior concrete to level uneven surfaces. It cures to a fine sand finish and repairs bubbles, honeycomb, and concrete defects such as waviness and plumbness along with large holes and cracks from 3mm to 5mm.

### Technical Data

Vehicle Type: Acrylic

Dry Time: Recoat in 1 hour. Full cure in 7 days.

*\*Measured at 25°C and 50% relative humidity*

*\*\*Depending on thickness of application*

Practical Coverage per 16-Liters: 10 sq. m. (at 3mm application)

*\*Depending on surface texture and porosity*

Mixing Ratio: 1:1 with cement, by weight

Pot Life: 30 minutes to 1 hour

Clean-up Solvent: Water

Packaging: 16-Liters

Application: By trowel

### Surface Preparation

Surface should be clean and dry, free from oil, grease, dust, dirt, contaminants, and all loose grit and mortar. Always dampen the concrete before application. Plastered walls should already be cured for at least 14-28 days prior to the application of the render.

### Material Preparation

Thoroughly mix K-202 High-Performance Acrylic Render in its container. Afterwards, transfer the product to a suitable container and mix it with sifted cement at a 1:1 ratio by weight until a lump-free, homogenous paste is achieved. Do not add water. Use Portland cement (for ordinary cement color) or white cement (to produce a white finish).

### Application Schedule

Using a steel trowel, apply a thin layer of mixture on the surface by firmly pressing the edge of the trowel on the concrete until all areas are covered. Let it dry for at least 1 hour before applying the second coat. If trowel marks are visible, let surface dry for at least another hour before sanding to further smoothen surfaces. Allow at least 7 days to cure before painting. No need to neutralize.

# Konstrukt™ Permaplast™

## K-222 Interior Render

K-222 Interior Render is a cement-based plaster used to level uneven concrete substrates. It dries to a fine sand finish and repairs bubbles, honeycomb, and concrete defects such as waviness, plumbness, large holes and cracks from 3mm to 8mm thick.

### Technical Data

Form: Powder

Dry Time: Recoat in 1 hour.

*\*Measured at 25°C and 50% relative humidity*

*\*\*Depending on thickness of application*

Practical Coverage: 5 to 6 sq. m. per 25-kg bag at 3mm

*\*Depending on surface texture and porosity*

Mixing Ratio: 5.5 Liters of water per 25-kg bag

Pot Life: 1 hour

Clean-up Solvent: Water

Packaging: 25-kg per bag

Application: By trowel

### Surface Preparation

Surface should be clean and dry, free from dust, dirt, and other foreign matter. Always dampen the concrete before application. Plastered walls should already be cured for at least 14-28 days prior to the application of the interior render.

### Material Preparation

Mix a 25-kg bag of K-222 Interior Render with 5.5 Liters of water in a clean container. Using a mixing device, stir until a trowelable consistency is attained. Take note that once mixed, the product should be used within 1-2 hours. Avoid adding water into mixture that has begun to set as it will weaken product properties.

### Application Schedule

Using a steel trowel, apply the mixture on uneven surfaces, initially on surfaces with deep openings not more than 8mm in depth. Let the product dry for an hour before applying the second coat, if necessary. For a smooth finish, apply K-201 High-Performance Acrylic Skimcoat over K-222 Interior Render after K-222 has cured for 3 days.



# 02

## DRYWALL

- Corrects minor surface imperfections
- Fast-setting, highly recommended for high-build and fast-curing applications
- Asbestos-free formulation
- Minimal shrinkage
- Paint compatibility

## DRYWALL

Konstrukt Durafill is the system that holds walls together and gives that seamless look to gypsum boards.

Highly functional, this system’s characteristics of excellent crack resistance and minimal shrinkage gives contractors the assurance that the walls are stable surfaces to work with.

Konstrukt Durafill’s formulation makes it highly compatible with paint, which makes the painting work fast and easy.







Konstrukt™ Durafill™  
K-101 Gypsum Putty



Konstrukt™ Durafill™  
K-103 Fast-Setting  
Gypsum Compound

## Konstrukt™ Durafill™ K-101 Gypsum Putty & K-103 Fast-Setting Gypsum Compound

K-103 Fast-Setting Gypsum Compound is a powder-type gypsum-based filler formulated to patch holes and overjoints that are at least 3mm wide in drywalls. It is highly recommended for high-build and fast curing applications prior to the finishing application of Konstrukt Durafill K-101 Gypsum Putty.

K-101 Gypsum Putty is a high quality water-based and asbestos-free putty developed to patch holes and overjoints on gypsum boards. It contains sufficient binders to secure the reinforcing tape and it gradually increases in strength and hardness as it dries. It has excellent crack resistance and sandability, superior paint compatibility, and minimal shrinkage.

### Technical Data

	K-101	K-103
VOC	<2 g/L	0 g/L
Recoat Time <i>*Measured at 25°C and 50% relative humidity</i>	2 hours	30-60 minutes
Practical Coverage <i>*Depending on surface texture and porosity</i>	12.58 linear meter per Liter	80 sq. m. per 20-kg bag
Mixing Ratio	Ready to use	Mix 9-Liters water per 20-kg bag
Clean-up Solvent	Water	Water
Packaging	4-Liters and 16-Liters	20-kg bags
Application	Putty knife	Putty knife

### Principal Uses

K-101 and K-103 are for interior application only. These products are specially formulated for use on gypsum boards. Do not use products on concrete substrates.

### Surface Preparation

Surface should be clean and dry, free from dust, dirt, and other foreign matter. For drywall substrates, install and secure joints as per manufacturer’s recommendations.

### Material Preparation

Mix 9-Liters of clean water with 20-kg of K-103 Fast-Setting Gypsum Compound until a lump-free homogenous paste is achieved. Use of power mixer is recommended for optimum results.

### Painting Schedule

Filler: K-103 Fast-Setting Gypsum Compound  
Putty: K-101 Gypsum Putty  
Primer: BOYSEN® Permacoat™ Flat B-701  
Topcoat: Any water-based paint (i.e. BOYSEN® Permacoat™, BOYSEN® Healthy Home™, Virtuoso™ Silk Touch™)



# 03

## FLOORING

Faster application saves time and money

Economical system (tile-on-tile application)

Excellent performance: bond strength and flexibility



# FLOORING

Konstrukt Tileworks is the system used to prepare substrates for a perfect flooring.

Whether it's thin-bed or thick-bed applications, or whether the use of the floor is light or heavy, this system ensures that your floors are even, level, sealed, strong, and ready for the floor covering that has been chosen.

For tiled floors, there is also a product system that can handle tile-on-tile applications for a more economical solution.



Konstrukt™ Trafficshield™  
K-411 Ground Repair



Konstrukt™ Trafficshield™  
K-441 Floor Screed



K 406  
TRAFFICSHIELD  
RAPID CURE LEVELING UNDERLAYMENT COMPOUND

☐ 20kgs  
☒ 25kgs



K 402 TRAFFICSHIELD  
CONCRETE LEVELING BOND COAT

Konstrukt™ Trafficshield™  
K-402 Concrete Leveling Bond Coat &  
K-406 Rapid Cure Leveling  
Underlayment Compound



KONSTRUKT  
TILEWORKS™  
ALL PURPOSE TILE ADHESIVE  
K302

25  
KILOS

Manufactured by:  
**BOYSEN**  
The No. 1 PAINT

Konstrukt™ Tileworks™  
K-321 Tile Adhesion Promoter &  
K-302 All-Purpose Tile Adhesive



K 321  
TILEWORKS  
TILE ADHESION PROMOTER



# Konstrukt™ Tileworks™

## K-321 Tile Adhesion Promoter & K-302 All-Purpose Tile Adhesive

K-302 All-Purpose Tile Adhesive is a cement-based adhesive for homogenous tile installations such as ceramic tiles for walls and floors. It can be used in thin-bed and thick-bed applications.

K-321 Tile Adhesion Promoter is an acrylic-based liquid emulsion that is mixed with K-302 All-Purpose Tile Adhesive for tile-on-tile and heavy applications.

### Technical

	K-302	K-321
Vehicle Type	Powder	Acrylic
VOC	0 g/L	0.1 g/L (*±2 g/L)
Practical Coverage <i>*Depending on the unevenness of the surface</i>	4-6 sq. m. per 25-kg bag	4-6 sq. m. per Liter
Clean-up Solvent	Water	Water
Packaging	25-kg bags	1-Liter
Application	By notched trowel	By brush

### Surface Preparation

Surface should be clean and dry, free from dust, dirt, and other foreign matter. Dampen substrate prior to the application of the tile adhesive.

### Application Schedule

For heavy-duty applications, mix a 25-kg bag of K-302 All-Purpose Tile Adhesive with 6-Liters of clean water in a clean container. Add at least ¼ Liter of K-321 Tile Adhesion Promoter and stir with a mixing device until desirable consistency is achieved.

Dampen the substrate prior to application of product. Using a notched trowel, spread the adhesive around a square meter at a time. Apply to desired level to smoothen any uneven surfaces. Place and align tiles. Adjust height accordingly by gently tapping the tiles using a rubber mallet. Fix tiles immediately within the 15-minute open time.

For tile-on-tile application, mix 1-Liter of K-321 Tile Adhesion Promoter, 1-Liter of clean water, and 3-kg of K-302 All-Purpose Tile Adhesive in a clean container. After attaining the desired consistency, apply the mixture using a brush on the existing tiles. Let the mixture dry for 3 to 4 hours or overnight before tiling.

- For horizontal application, add ¼ Liter of K-321 Tile Adhesion Promoter per 25-kg bag of K-302 All-Purpose Tile Adhesive
- For vertical application, add ½ Liter of K-321 Tile Adhesion Promoter per 25-kg bag of K-302 All-Purpose Tile Adhesive.

Using a notched trowel, spread the adhesive a square meter at a time. Apply up to 3mm minimum thickness.

# Konstrukt™ Trafficshield™

## K-402 Concrete Leveling Bond Coat & K-406 Rapid Cure Leveling Underlayment Compound

K-402 Concrete Leveling Bond Coat is a product generally used to seal substrates prior to the application of Konstrukt Trafficshield products such as K-421 Floor Putty, K-441 Floor Screed, K-411 Ground Repair, and K-406 Rapid Cure Leveling Underlayment Compound.

K-406 Rapid Cure Leveling Underlayment Compound is a product used to level minor substrate unevenness before the placement of various coverings such as vinyl, laminated floorings, and carpets.

### Technical

	K-402	K-406
Form	Liquid	Powder
VOC	0 g/L	0 g/L
Practical Coverage <i>*Depending on surface texture and porosity</i>	25-30 sq. m. per 4-Liters	Approximately 1.5 kg/ sq. m./mm
Clean-up Solvent	Water	Water
Mixing Ratio	N/A	5.5 Liters of water per 25-kg bag
Pot Life	40 to 60 minutes	20 to 60 minutes
Packaging	16-Liter cans	25-kg bags
Application	By brush or roller	By screed rake or spiked roller

### Surface Preparation

Surface should be clean and dry, free from dust, dirt, and other foreign matter.

### Application Schedule

1. Shake K-402 well before application. Apply the product by using a brush or roller, making sure that K-402 is absorbed by the floor. Wait for at least an hour before applying other Konstrukt Trafficshield products.
2. Put the 25-kg bag of K-406 into a suitable container. Using a drill mixer, mix the product with 5.5 Liters of water until a lump-free homogenous paste is reached.
3. Pour out the mixture onto the properly sealed substrate and distribute it evenly with a smoothening trowel or a screed rake. Applicator must wear a pair of spiked shoes while using a spiked roller to eliminate foams during the application.
4. The mixture should be used within 20-30 minutes after mixing. Avoid the addition of water into mixture that has begun to set. Wait for approximately 24 to 48 hours for the product to cure before placing various coverings on top of it.



# Konstrukt™ Trafficshield™

## K-411 Ground Repair

K-411 Ground Repair is a cement-based plaster used to patch ground imperfections from 10mm to 75mm deep.

### Technical Data

Form: Powder

VOC: 0 g/L

Setting Time: 20 to 30 minutes

Mixing Ratio: 3 to 3.5 Liters of water per 25-kg bag

Clean-up Solvent: Water

Packaging: 25-kg bags

Application: By trowel or putty knife

### Surface Preparation

Check and repair all relevant defects by consulting necessary civil works.

### Material Preparation

Put 25-kg of K-411 Ground Repair into a suitable container (like a plastic bucket). Using a drill mixer, thoroughly mix the product with 3 to 3.5 Liters of water until a lump-free homogenous paste is reached.

### Application Schedule

Using a steel trowel, apply the prepared mixture onto the substrate by pressing the edge of the trowel firmly on the concrete until all areas are covered. The prepared mixture should be used within 20 to 30 minutes after mixing. Avoid the addition of water into the mixture that has already begun to set. Allow product to cure for approximately 24 hours before placing various coverings on top of it.

# Konstrukt™ Trafficshield™

## K-441 Floor Screed

K-441 Floor Screed is a construction element laid to form a durable substrate suitable for the installation of specified flooring. It is applied on the floor in required 5mm to 30mm thickness.

### Technical Data

Form: Powder

VOC: 0 g/L

Pot Life: 60 minutes

Practical Coverage at 20mm application: Approximately 1 sq. m./ 25-kg bag

*\*Depending on surface texture and porosity*

Mixing Ratio: 3.25 to 3.50 Liters of water per 25-kg bag

Clean-up Solvent: Water

Packaging: 25-kg bags

Application: By trowel

### Surface Preparation

Check and repair all relevant defects by consulting necessary civil works. Always make sure that the surface is clean and dry, free from oil, grease, dust, dirt, and other foreign matters.

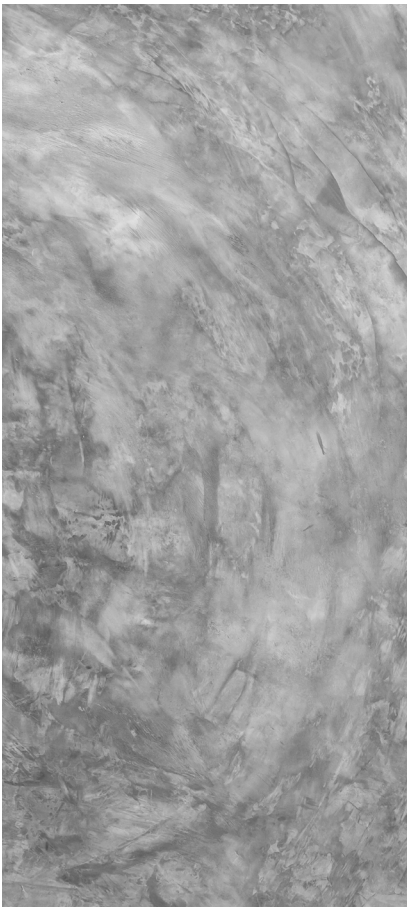
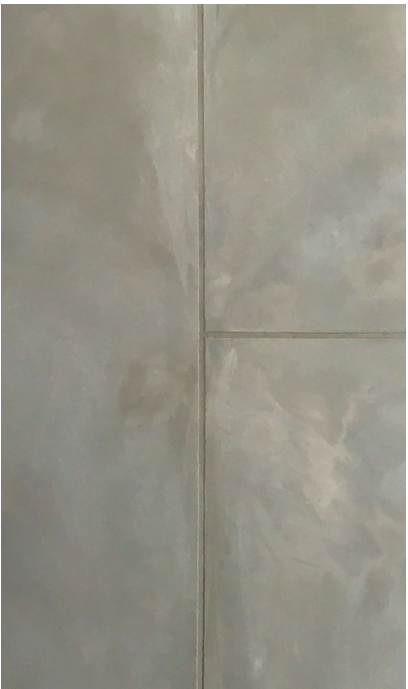
### Material Preparation

Put 25-kg of K-441 Floor Screed into a suitable container (like a plastic bucket) and mix it with 3.25 to 3.50 Liters of clean water until a lump-free homogenous paste is reached.

### Application Schedule

Pour the prepared mixture onto the substrate and distribute it evenly using a smoothing trowel. The mixture should be used within an hour after mixing. Avoid the addition of water into mixture that has begun to set. Drying time is approximately 3 days prior to the placement of various coverings.









**The No. 1 PAINT**

**PACIFIC PAINT (BOYSEN) PHILIPPINES, INC.**

292 D. Tuazon Street, Quezon City, Philippines

Tel Nos.: (+632) 8364-9999; (+632) 8364-3505 to 09; (+632) 8365-0561 to 64

Fax: (+632) 8361-7164; (+632) 8367-8881

[inquiry@boysen.com.ph](mailto:inquiry@boysen.com.ph)

[www.boysen.com.ph](http://www.boysen.com.ph)

[konstruktchem.com](http://konstruktchem.com)

BOYSEN®, BOYSEN® eagle symbol, Konstrukt™ Durafill™, Konstrukt™ Permaplast™, Konstrukt™ Tileworks™, Konstrukt™ Trafficshield™, Permacoat™, Healthy Home™, and Virtuoso™ Silk Touch™ are registered trademarks of Pacific Paint (BOYSEN) Philippines, Inc.